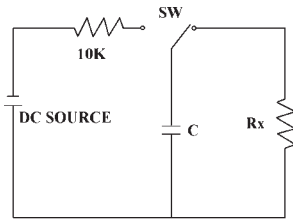


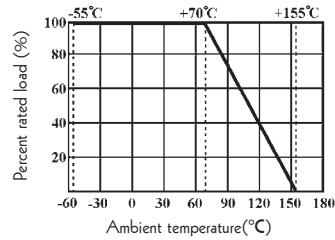
Surge Withstanding Voltage



Discharge cycle: 2.5 seconds "ON", 2.5 seconds "OFF", 50 cycles, C=0.001uF

The applied DC source voltage is shown as below table

Derating Curve



Specification



Part No.	Type	Power Rating at 70°C	Dimension(mm)				Max. Working Voltage	Max. Overload Voltage	Dielectric Withstanding Voltage	Surge Withstanding Voltage	Resistance Range
			D Max.	L Max.	d±0.05	H±3					
HMGR 0W4	HMGR-25	1/4W	2.7	7.0	0.6	28	500	1,000V	700V	10 KV	500K-510MΩ (1% 2% 5% 10%)
HMGR 0W2	HMGR-50	1/2W	4	10	0.6	28	1,000V	2,000V	700V		
HMGR 01W	HMGR -100	1W	4.7	13	0.7	28	2,000V	3,000V	1,000V	10 KV	500K-1GΩ (1% 2% 5% 10%)
HMGR 02W	HMGR -200	2W	6	17	0.8	28	3,000V	4,000V	1,000V		

Ordering Procedure (Example: HMGR 1W 5% 200MΩ T/B -1000)

