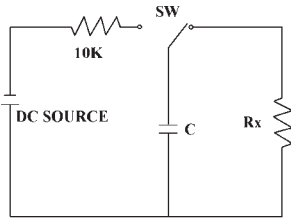


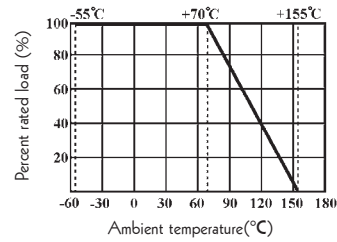
Surge Withstanding Voltage



Discharge cycle: 2.5 seconds "ON", 2.5 seconds "OFF", 50 cycles, C=0.001uF

The applied DC source voltage is shown as below table

Derating Curve



Specification

Part No.	Type	Power Rating at 70°C	Dimension (mm)				Max. Working Voltage	Max. Overload Voltage	Dielectric Withstanding Voltage	Surge Withstanding Voltage	Resistance Range
			D Max.	L Max.	d±0.05	H±3					
HVR0W4	HVR-25	1/4W	2.7	7.0	0.6	28	1,600V	2,000V	700V	10,000V	1K-100M (±5%, ±10%) 100K-1M (±1%)
HVR0W2	HVR-50	1/2W	4	10	0.6	28	3,500V	4,000V	700V		
HVR01W	HVR-100	1W	4.7	13	0.7	28	3,500V	4,000V	700V		
HVR02W	HVR-200	2W	6	17	0.8	28	3,500V	4,000V	700V		

Ordering Procedure (Example: HVR 1W 5% 27MΩ T/B -1000)

