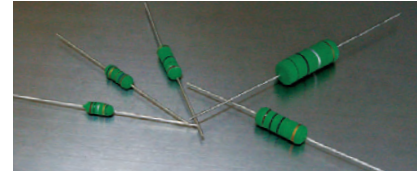
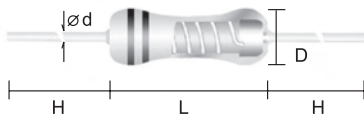


Feature

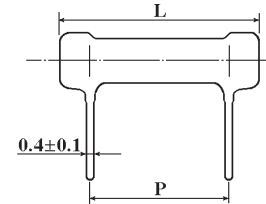
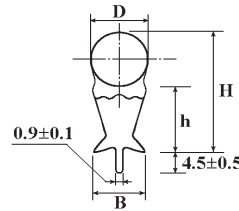
- Excellent flame retardant coating
- Too low or too high ohmic value can be supplied on a case to case basis
- Non-Inductive type available



KNP Type



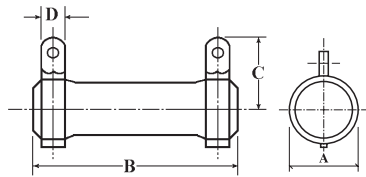
KNS Type



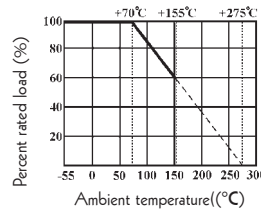
Part No.	Type	Power Rating at 70°C	Dimension (mm)						Resistance Value Range
			D Max.	L ± 1.5	P ± 1	H ± 1	h ± 1	B ± 0.5	
KNS02W	KNS-200	2W	8	19	8	19	12	4.5	0.1Ω ~ 50Ω
KNS03W	KNS-300	3W	8	21	10	19	13	4.5	0.5Ω ~ 50Ω
KNS05W	KNS-500	5W	10	26	15	21.5	13	6.5	0.5Ω ~ 100Ω
KNS07W	KNS-700	7W	10	31	20	21.5	13	6.5	1Ω ~ 1KΩ
KNS08W	KNS-800	8W	10	41	30	21.5	13	6.5	1Ω ~ 1.5KΩ
KNS0AW	KNS-1000	10W	10	54	43	21.5	13	6.5	1Ω ~ 2KΩ

Part No.	Type	Power Rating at 70°C	Dimension (mm)				Resistance Value Range
			D ± 1	L Max.	d ± 0.05	H ± 3	
Normal Size							
KNP0W2	KNP-50	1/2W	4.5	10	0.54	28	0.1Ω ~ 39Ω
KNP01W	KNP-100	1W	5	12	0.65	28	0.1Ω ~ 50Ω
KNP02W	KNP-200	2W	5.5	16	0.65	28	0.1Ω ~ 120Ω
KNP03W	KNP-300	3W	6.5	17.5	0.75	28	0.1Ω ~ 200Ω
KNP05W	KNP-500	5W	8.5	26	0.75	38	0.5Ω ~ 470Ω
KNP07W	KNP-700	7W	8.5	32	0.75	38	0.5Ω ~ 470Ω
KNP08W	KNP-800	8W	8.5	41	0.75	38	1Ω ~ 1.5KΩ
KNP09W	KNP-900	9W	8.5	54	0.75	38	1Ω ~ 1.5KΩ
Small Size							
KNP01S	KNP-100-S	1W	4.5	10	0.54	28	0.1Ω ~ 39Ω
KNP02S	KNP-200-S	2W	5	12	0.65	28	0.1Ω ~ 50Ω
KNP03S	KNP-300-S	3W	5.5	16	0.65	28	0.1Ω ~ 120Ω
KNP05S	KNP-500-S	5W	6.5	17.5	0.75	28	0.1Ω ~ 200Ω
KNP07S	KNP-700-S	7W	8.5	26	0.75	38	0.5Ω ~ 470Ω
KNP08S	KNP-800-S	8W	8.5	32	0.75	38	0.5Ω ~ 470Ω
KNP09S	KNP-900-S	9W	8.5	41	0.75	38	1Ω ~ 1.5KΩ
KNP0AS	KNP-1000-S	10W	8.5	54	0.75	38	1Ω ~ 1.5KΩ

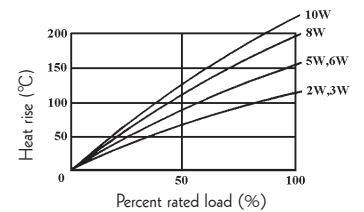
KNH Type



Derating Curve



Heat Rise Chart



Part No.	Type	Power Rating at 70°C	Dimension (mm)				Resistance Value Range
			A ± 1.5	B ± 1.5	C ± 3	D ± 1	
KNH020	KNH-20W	20W	19	50	19	5	0.4Ω ~ 1KΩ
KNH025	KNH-25W	25W	19	60	19	5	0.4Ω ~ 1KΩ
KNH030	KNH-30W	30W	19	75	19	5	0.5Ω ~ 3KΩ
KNH040	KNH-40W	40W	19	90	19	5	0.6Ω ~ 5KΩ
KNH050	KNH-50W	50W	31	75	31	8	3Ω ~ 10KΩ
KNH060	KNH-60W	60W	31	90	31	8	3Ω ~ 15KΩ
KNH080	KNH-80W	80W	31	115	31	8	3Ω ~ 20KΩ
KNH 100	KNH-100W	100W	31	140	31	8	3Ω ~ 30KΩ

Performance Specification

- Temperature coefficient ≥20Ω: ±300PPM/°C, <20Ω: ±400PPM/°C
- Short-time overload ΔR/R ≤ ±(2%+0.05Ω), with no evidence of mechanical damage
- Terminal strength No evidence of mechanical damage
- Resistance to soldering heat ΔR/R ≤ ±(1%+0.05Ω), with no evidence of mechanical damage
- Solderability Min. 95% coverage
- Load life in humidity ΔR/R ≤ ±(5%+0.05Ω), with no evidence of mechanical damage
- Load life ΔR/R ≤ ±(5%+0.05Ω), with no evidence of mechanical damage

Ordering Procedure (Example: KNP 3W-S 5% 12Ω T/B-1000)

